

SOLVENT RECYCLING EQUIPMENT

**LS Series options**

**Vacuum Attachments**



Vacuum attachment for LS55 shown here

**Description:**

JetVac is used to create a vacuum within the distillation unit. It can be used for all LS models; allows safe processing of solvents with boiling points up to 500° F.

**AutoFill Option**



**Description:**

Allows automatic filling of LS 15/55IIE from customer supplied waste tank. Comes complete with pump, flow meter, controls and top fill option.

**Little Cooler Option**



**Description:**

A self-contained water/glycol recirculation system to provide a closed loop water supply to the condenser, saving on water consumption and maintenance.

**Stainless Steel Condensers**



**Description:**

316 stainless steel shell and tube for demanding or very high purity applications.

**System II Lid**



**Description:**

Allows user to retrofit standard LS15/55E unit to use top fill option. Has sight glass to view fill process.

**Drum Pump and TopFill option**

**Description (Drum Pump):**

316 stainless steel drum pump with either air or electric explosionproof motor. Ideal for pumping flammable and non-flammable solvents.

**Description (TopFill Option):**

Connects pump to System II Lid allowing user to manually fill the LS15/55IIE with lid shut. Reduces exposure to hazardous vapors.



### **Stilbags / Stilpan**



**Description:**

Convenient bag or pan option to remove residue with minimal operator contact. Helps maintain the long term efficiency of the LS equipment.

### **Standard Diameter Insert**



**Description:**

Non-stick coated insert can be used with older units in which the coating has become damaged. Must use heat transfer oil with insert.

### **Scrapers**



**Description:**

Scrapers are for removal of hardened residue. Solvent resistant, non-sparking, non-abrasive material will not harm non-stick coated surfaces.

### **NEET Timer**



**Description:**

**Non-explosionproof** electric timer (24hr.) terminates distillation process automatically. Must be installed outside the hazardous area.

### **TSOT Timer**



**Description:**

**Non-explosionproof** timer allows automatic shut off of LS unit by time (16 hr. timer) or temperature. Can run two devices. Must be installed outside the hazardous area.

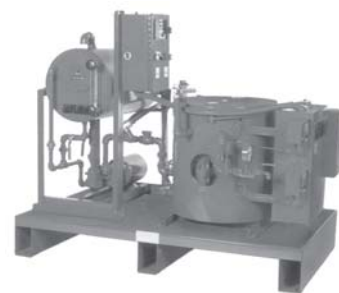
### **Explosionproof Timer**

**Description:**

Explosionproof electric timer (16hr.). Automatically terminates distillation process based on customer adjustable preset time. Timer is standard on System II units.

(not shown)

### **Chillers / Boilers**



FTI offers chiller packages for the LS-JrE, LS15E, LS55E. Boiler packages are available for the LS55 STE.

**Description:**

Chiller provides refrigerated recirculating fluid for vapor condensing.

Boiler is for users requiring the steam capability but do not have an in-plant steam source.



### **FINISH THOMPSON INC.**

921 Greengarden Road • Erie, PA 16501-1591 U.S.A.  
Ph 814-455-4478 • Fax 814-455-8518  
Email [fti@finishthompson.com](mailto:fti@finishthompson.com) • [www.finishthompson.com](http://www.finishthompson.com)

Toll Free USA & Canada 1-800-934-9384  
Literature I.D. No. FT99-770B, 9-6-06